



# PRODUCT SPECIFICATION

---

## SKY-LIGHT



---

## INTRODUCTION

---

The Sky-Light LED range has been developed to offer retailers an aesthetically pleasing energy efficient solution for high level open store lighting. The product utilises the high transmission opal diffusers to provide maximum efficiency whilst ensuring that the point source of the individual LED chips are not visible from below. The bespoke waveform diffusers ensure that the product appears lit when viewed from any angle across the store and the fitting can be supplied in a range of end cap colours to allow you to customise its appearance to match your corporate identity. These features coupled with a wide range of lumen outputs combine to make the Sky-Light LED the most advanced, energy efficient, high level LED luminaire in its class and the ideal choice for the modern retail environment. The Sky-Light 2 is also compatible with a range of wireless controls allowing for basic dimming and control through to centralised web based reporting for energy and emergency reporting with our Reacta-Link system as well as integral lithium emergency helping to ensure the safety of your installation.

We offer a range of wireless control systems providing localised grouping and control as well as comprehensive wireless solutions allowing both standard and emergency luminaires to be centrally monitored.



CE IP20 TM21: L90>60K HOURS / L80>90K HOURS 3 STEP MACADAM ELLIPSE

---

## APPLICATION

---

- Hotel / Leisure
- Retail

---

## SPECIFICATION

---

### CONSTRUCTION

- Housing: 0.7mm CR4 steel
- Finish: Polyester powder painted BS 00E55 matt white 60% gloss
- Endcaps: Injection moulded polycarbonate
- Diffuser: 2mm high transmission opal polycarbonate TP(a) rated
- IP20

;

### PERFORMANCE

- Part L2 compliant
- 3SDCM Three step Macadams ellipse
- TM21: L90>60K Hours / L80>90K Hours
- Up to 150 luminaire lumens per circuit Watt.

;

### ENVIRONMENTAL

- Designed to allow simple replacement of components with commonly available tools in compliance with the Eco Design Directive, please see the installation leaflet for maintenance instructions.
- Powered by European branded drivers and emergency modules ensuring replacement parts are easily sourced.
- Every luminaire is labelled with a unique ID number allowing easy identification of spare parts for the lifetime of the product.
- Contains no single use plastics or polystyrene packaging.
- Supplied in plain card boxes with paper tape ensuring packaging is easily recycled.
- Designed to allow simple disassembly for end of life recycling.
- UK based manufacturing providing local support throughout the product lifetime and minimising transportation miles.

;

### EMERGENCY

- Available with optional standard, self test and autotest integral emergency with lithium batteries for extended warranty and lifetime.
- Optional Reacta-Link wireless emergency for automated centralised reporting.
- Optional Reacta-Control wireless emergency for automated centralised reporting.
- Optional central battery changeover relay

;

### CONTROL

- Optional compatibility with a range of dimming systems including DALI, DSI and Switch Dimming
- Optional integral Reacta-Link for integration with Reacta-Link wireless installations

;

### INSTALLATION

- Suitable for suspended installation

- Suitable for conduit installation
- Can be supplied with M6 captive cage nuts for direct mounting to trunking.

;

### VARIATIONS

- Available with a wide range of colour temperatures and renderings
- Available in a range of housing sizes and lumen outputs

;

## IMAGES

### PRODUCT IMAGES



Sky-Light 1500mm

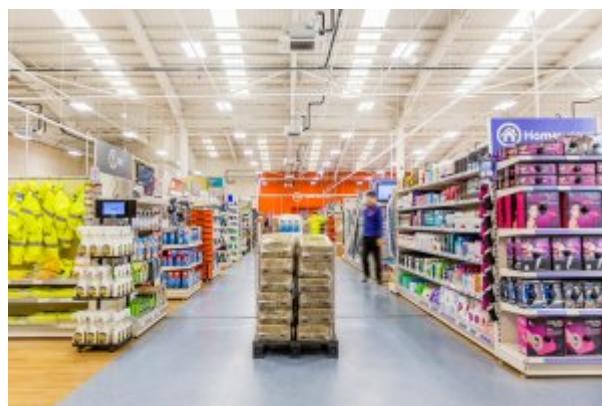


Sky-Light 1000mm

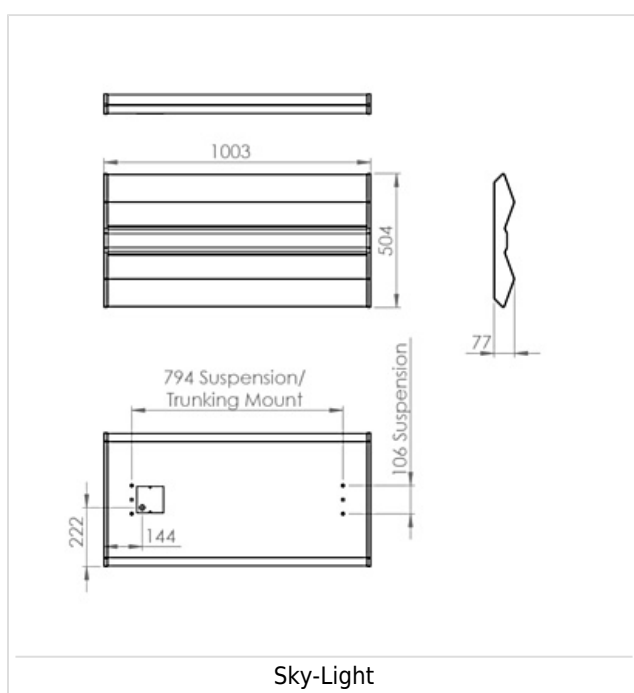


Sky-Light Suspension Kit

### PROJECT IMAGES



## TECHNICAL



---

## WARRANTY

---

At Dextra our commitment to service has been at the forefront throughout our history spanning more than forty years in the UK lighting market. Our service ethos extends beyond design and delivery, we believe supporting your installation throughout the warranty period is equally crucial, whilst the strength and longevity of Dextra Group provides peace of mind that our warranty will be supported throughout.

The Dextra range is supplied with a five year warranty commencing from the date of delivery. During the first three years defects will be repaired on site and the warranty will include both parts and labour. For the final two years drivers, emergency modules, wireless modules, sensors and LED circuits will be supplied free of charge to replace defective components, labour and other associated costs are not included.

Certain ranges and components are subject to exemptions:

- Lithium batteries are provided with a five year warranty. During the first three years defects will be repaired on site and the warranty will include both parts and labour. For the final two years replacement batteries will be supplied free of charge to replace defective components. Five year warranty became effective as of 03/02/25, Lithium emergency luminaires supplied prior to this date are supported with a three year on site warranty only. Labour and other associated costs are not included. Nickel Metal Hydride and Nickel Cadmium batteries are provided with a one year warranty for parts and labour.
- Emergency luminaires including AME LED, EXI LED, EXI3, EXI Track, HBE LED, HBE3, OAT2 LED, OEZ2 and Twinspot are supplied with a one year warranty for parts and labour. Lithium variants suffixed with the 5YR part code, the Autotest emergency with the LA3 part code and wireless variants with LA3RC or LSTR part codes are supplied with a five year warranty. For these extended warranty variants for the first three years defects will be repaired on site and the warranty will include both parts and labour. For the final two years replacement batteries will be supplied free of charge to replace defective components.
- Protec Micro, PTECF7 Fire Rated Downlights, Serenus and the Opus Sconce are provided with a five year replacement luminaire only warranty. Protec FR Fire Rated Downlights are provided with a 2 year replacement luminaire only warranty.
- Controls systems such as standalone sensors, switches, marshalling boxes and cabling are provided with a one year warranty for both parts and labour. DALI control systems are provided with a two year warranty for both parts and labour.
- LEDextra ranges are supplied with a three year parts or replacement luminaire only warranty with the exception of the IMPR RGBW, the Runway RGBW, the MOD RGBW, Tanek RGBW and the DexRing. These five ranges are supplied with our standard five year warranty during which defects within the first three years will be repaired on site and the warranty includes both parts and labour. For the final two years free of charge replacement components only will be supplied to rectify any failures but labour and other associated costs are not included.
- LEDEX ranges are supplied with a three year replacement luminaire only warranty.
- The Decorative Pendant ranges, Bebo, Dene, Nova, Fino and Stix are supplied with a 3 year replacement luminaire only

warranty.

All warranties are subject to correct use of the product and will be invalidated by misuse, for example incorrect installation, unsuitable environmental conditions or incorrect maintenance. It is the duty of the customer to ensure that all the fault lies with the luminaire prior to requesting replacement parts or site repairs. In the event that no defect is found with the product our costs for attending site will be recharged to the customer and credit will not be issued against returned products. No consequential losses incurred resulting from any defect with our product will be reimbursed.

Given the nature of LED technology a small percentage of LEDs may fail during the lifetime of a luminaire, this does not cause a reduction in lumen output. As such LED luminaires are only deemed to be faulty for warranty purposes when in excess of ten percent of LEDs have failed in a single luminaire.

On site repair of products under warranty will be undertaken during normal working hours, 9am to 5pm Monday to Friday, and will require unrestricted access to luminaires. Where required Dextra will provide access equipment to carry out repairs at height, should luminaires have been installed in locations where reasonable provision for maintenance access has not been made we reserve the right to supply replacement product only. On site warranty repairs will only be undertaken on the mainland of the UK and Ireland, in all other locations replacement product only will be provided.

**If you require any assistance with regards to our products please contact our Customer Services department on 01747 858100.**

## ORDER CODES

### LUMINAIRE

Code	Description	Power	Llm/W
SKY L132 OP WH	Skylight, 10,718lm C84, 1000mm, Opal Diffuser	75.7W	141
SKY L170 OP WH	Skylight, 13,804lm C84, 1000mm, Opal Diffuser	96.6W	142
SKY L192 OP WH	Skylight, 15,590lm C84, 1000mm, Opal Diffuser	107.8W	144
SKY L222 OP WH	Skylight, 18,025lm C84, 1000mm, Opal Diffuser	128.2W	140
SKY L255 OP WH	Skylight, 20,451lm C84, 1000mm, Opal Diffuser	135.6W	150
SKY L300 OP WH	Skylight, 24,060lm C84, 1000mm, Opal Diffuser	173.9W	138
SKY L340 OP WH	Skylight, 27,283lm C84, 1000mm, Opal Diffuser	193.3W	141

### DIMMING

Code	Description
A	DALI Digital Addressable Lighting Interface
S	Switch Dimming
D	DSI Digital Dimming
H	HFR Analogue 1-10v
C	Bi-Level Dimming For Standalone Switched Sensor

### CONTROL

Code	Description
RLI	Reacta-Link, Wireless Enabled Luminaire
RLS10	Reacta-Link Wireless, Presence, 5-10M
RLS15	Reacta-Link Wireless, Presence, 10-15M
RCS	Reacta-Control Wireless, Presence & Daylight, 2.5-4M



RCS18      Reacta-Control Wireless, Presence, Daylight, 8-18M

Please click [here](#) for full details on our wireless controls.

## EMERGENCY

Code	Description
LE3	Lithium Standard Emergency 3 Hour
LS3	Lithium Selftest Emergency 3 Hour
LA3	Lithium Autotest Emergency 3 Hour
LSTR	Lithium Reacta-Link Emergency 3 Hour
LA3RC	Lithium Reacta-Control Emergency 3 Hour
CB	Central Battery, Please Specify 110V or 230V when Ordering

## MISCELLANEOUS

Code	Description
C**	Select Colour Temperature and Rendering; C827, C83, C85, C865, C93, C94
4PM	4 Pole Panel Mount
6PM	6 Pole Panel Mount
SUSP SKY 5M BF X2	5M Suspension Kit Barrel Fix
LSF	Low Smoke Zero Halogen
SUSP SKY 5M LO X2	5M Loop Over Suspension Kit (Two Drops)
SUSP SKY 10M LO X2	10M Loop Over Suspension Kit (Two Drops)



220-240V / 50-60Hz

IP20

**Terminal Labelling:**

**Power**

L1 Switched Live  
E Earth  
N Neutral

**Emergency**

L2 Unswitched Live  
DA/AT3 DALI Autotest  
DALI Autotest

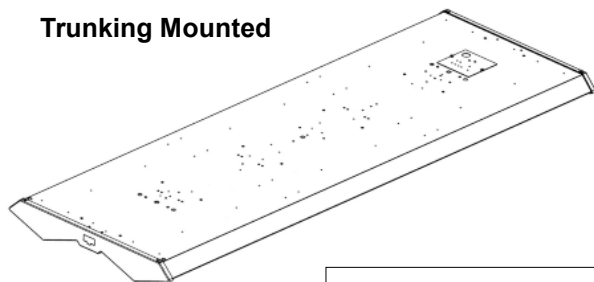
**Dimming**

-/D1/DA Analogue/DSI/DALI  
+/D2/DA Analogue/DSI/DALI  
L3 Switch Dim /  
Corridor Function

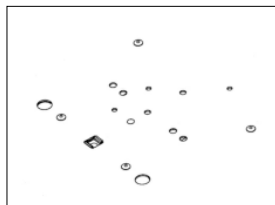


**WARNING:** Luminaire must be earthed. Risk of electric shock from LED boards if operated with cover removed. Installation / operation outside of luminaires intended scope invalidates warranty. Suitable only for domestic / light industrial / industrial applications within the scope of EN55015. Tested to compliance with BSEN 60598: specification for general requirements and tests. Must be installed by a suitably qualified person in accordance with all relevant legislation. Ambient operating temperature of 0°C to 25°C. If maximum operating temperature is exceeded luminaire will automatically dim / switch off. Terminal blocks are rated to 16A unless stated otherwise. The light source contained in this luminaire shall only be replaced by the manufacturer or his service agent or a similar qualified person. **LUMINAIRES WITH EMERGENCY PACK:** When supply is isolated battery output terminals may be live if battery is connected. Isolate mains and battery before servicing. Emergency luminaires require unswitched live connection taken from same phase as switched supply. When unswitched supply is connected status indicator illuminates green, when unswitched supply is disconnected indicator extinguishes and luminaire operates in emergency mode. 24 hour charge period required before undertaking full discharge test. Emergency test sheets provided should be used to record all emergency tests. Batteries should be replaced when 3 hour duration is not met. Excessive switching of permanent live may result in premature battery failure. Battery electrolyte can be harmful to eyes / open wounds, do not puncture, if electrolyte touches skin / eyes flush with water. Do not incinerate batteries.

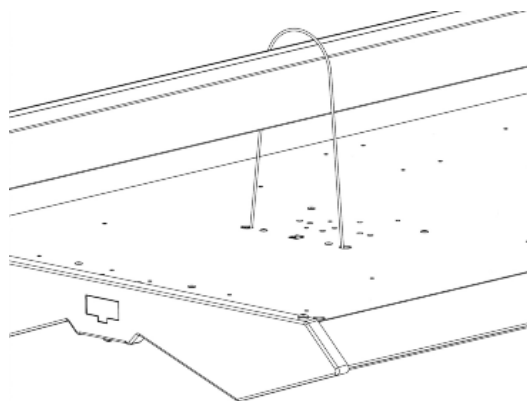
## 1. Trunking Mounted



Unpack luminaire carefully from packaging.  
Using the two 10mm rounds at either end, and the safety tethers provided, suspend the luminaire from the trunking.

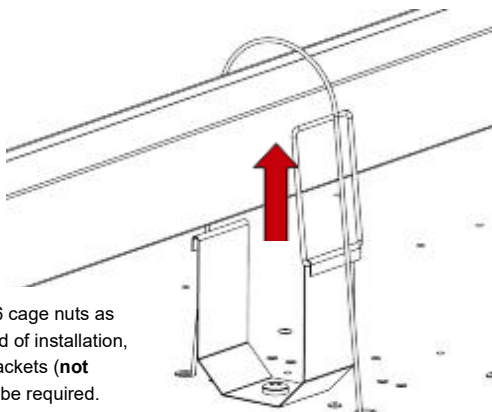


## 2.



**NOTE: THESE TETHERS ARE NOT TO BE THE SOLE METHOD OF INSTALLATION. ONLY TO BE USED AS A PRECAUTION.**

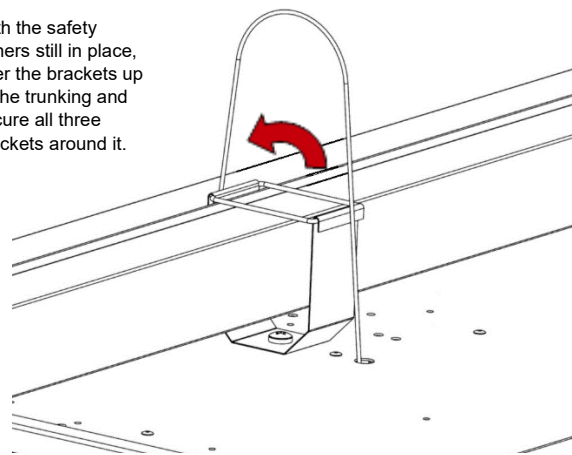
## 3.



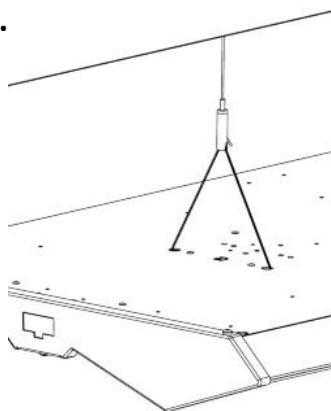
If using the M6 cage nuts as chosen method of installation, 3x trunking brackets (**not supplied**) will be required. Secure these to the luminaire using 3x M6x20 (or similar) screws (**not supplied**).

## 4.

With the safety tethers still in place, offer the brackets up to the trunking and secure all three brackets around it.



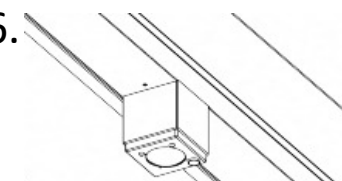
## 5.



If the luminaire requires suspending, the two 10mm rounds at either end on the rear are to be used along with suitable suspension toggles (not provided).

It is the contractor's responsibility to ensure the luminaire is level when suspended.

## 6.



**Sensor Option**

**NOTE: NOT RECOMMENDED FOR CHAIN OR NON-RIGID FIXING WHEN USED WITH SENSOR**

Mains connections may vary dependent upon the product ordered.

For flex connection,  
- Remove cover plate at rear of body  
- Pass flex through the cable entry hole  
- Connect to terminals as marked  
- Replace cover plate

For panel mount connection,  
- The appropriate connector must be selected and wired to match the configuration of the panel mount supplied with the fitting.

## Maintenance

- ① Disconnect luminaire before undertaking any maintenance or cleaning.
- ② Cleaning should be undertaken on external parts of the luminaire only using a slightly damp lint free cloth.
- ③ Remove screwcap cover to access screws on gear cover. To remove screws use a pan pozi screwdriver.
- ④ To access LED circuit use a pan pozi screwdriver to remove screws on the underside of the end caps. Diffuser will then be able to slide out.
- ⑤ Use a pan pozi screwdriver to remove components.
- ⑥ Please contact Dextra for assistance with spare components supply.

