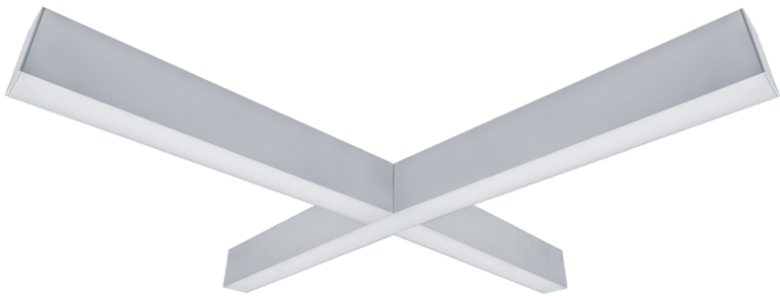




# PRODUCT SPECIFICATION

---

## RUNWAY CROSS



## INTRODUCTION

The Runway Cross is a standalone suspended pendant ideal for use intersecting suspended acoustic rafts or other architectural applications. Manufactured with an extruded aluminium housing, die cast end caps and extruded polycarbonate diffuser the Runway Cross has a high quality finish ideal for applications such as receptions, atriums and offices enhancing the environment for employees and customers alike. With three standard colour options, grey, black or white and other colours available on request the Runway Cross can also be customised to suit any theme. The Runway Cross compliments the Runway Suspended and Recessed ranges allowing a common theme and consistent appearance to be achieved across an entire installation.

This flexibility is further enhanced with optional integral lithium emergency, white tunable, dimming, integral sensors and two optic styles, a minimalist opal finish or microprism for glare compliance for use in office and school areas. The Runway also incorporates the latest mid power LEDs ensuring optimal energy efficiency with minimal need for maintenance over the course of its lifetime. We offer a range of wireless control systems providing localised grouping and control as well as comprehensive wireless solutions allowing both standard and emergency luminaires to be centrally monitored.

UK CA	CE	IP20	TM21: L90>60K HOURS / L80>90K HOURS	3 STEP MACADAM ELLIPSE
----------	----	------	-------------------------------------	------------------------

---

## RUNWAY CROSS – APPLICATION

---

- Education
- Office
- Retail

---

## RUNWAY CROSS – SPECIFICATION

---

### CONSTRUCTION

- Housing: Extruded aluminium
- Finish: Polyester powder painted BS 00E55 matt white 60% gloss
- Finish: Polyester powder painted RAL 9006 matt grey
- Finish: Polyester powder painted RAL 9005 matt black
- Endcaps: High pressure die cast aluminium
- Diffuser: 2mm extruded high transmission opal polycarbonate
- Diffuser: Combined 2mm extruded clear polycarbonate and 2mm microprism anti glare PMMA
- IP20

### PERFORMANCE

- Part L2 compliant
- BSEN 12464-1:2011 3000 Candela 65° and UGR 19 compliance
- 3SDCM Three step Macadams ellipse
- TM21: L90>60K Hours / L80>90K Hours
- Up to 109 luminaire lumens per circuit Watt.

### ENVIRONMENTAL

- Designed to allow simple replacement of components with commonly available tools in compliance with the Eco Design Directive, please see the installation leaflet for maintenance instructions.
- All critical components are mounted on a single tray for simple end of life repair or upgrade.
- Powered by European branded drivers and emergency modules ensuring replacement parts are easily sourced.
- Every luminaire is labelled with a unique ID number allowing easy identification of spare parts for the lifetime of the product.
- Contains no single use plastics or polystyrene packaging.
- Supplied in plain card boxes with paper tape ensuring packaging is easily recycled.
- Designed to allow simple disassembly for end of life recycling.
- UK based manufacturing providing local support throughout the product lifetime and minimising transportation miles.

## **EMERGENCY**

- Available with optional standard, self test and autotest integral emergency with lithium batteries for extended warranty and lifetime.
- Optional Reacta-Link wireless emergency for automated centralised reporting.
- Optional Reacta-Control wireless emergency for automated centralised reporting.

## **CONTROL**

- Optional compatibility with a range of dimming systems including DALI, DSI and Switch Dimming
- Optional Integral R44 presence and daylight sensor
- Optional Integral Reacta-Air wireless presence and daylight regulations sensor
- Optional integral Reacta-Link for integration with Reacta-Link wireless installations
- Optional integral Reacta-Control for integration with Reacta-Control wireless installations

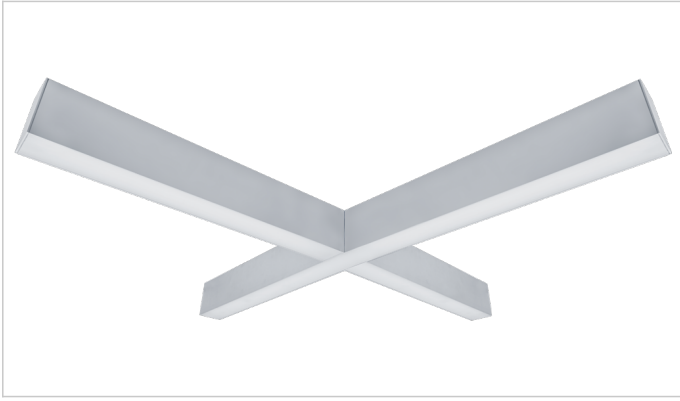
## **INSTALLATION**

- Suitable for suspended installation

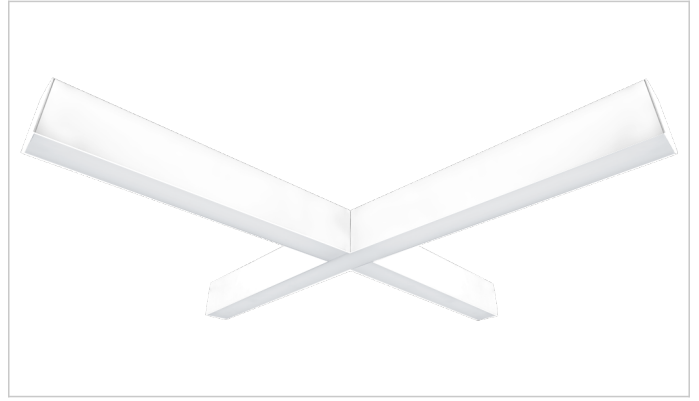
## **VARIATIONS**

- Available with a wide range of colour temperatures and renderings
- Available in white, black or grey finishes

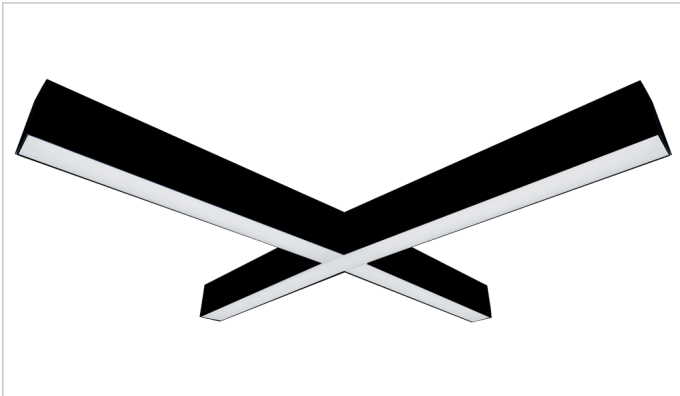
## RUNWAY CROSS - IMAGES



Runway Cross Grey



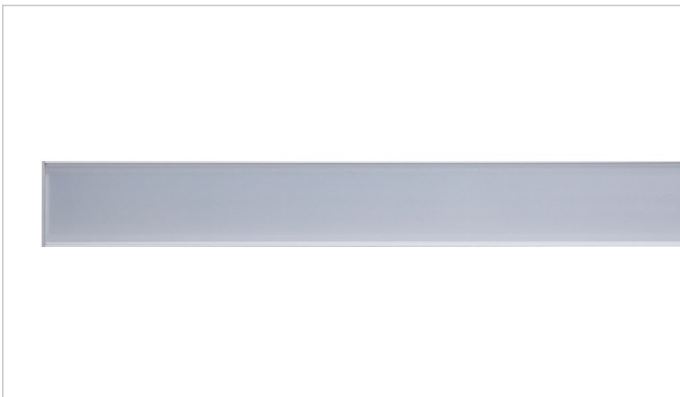
Runway Cross White



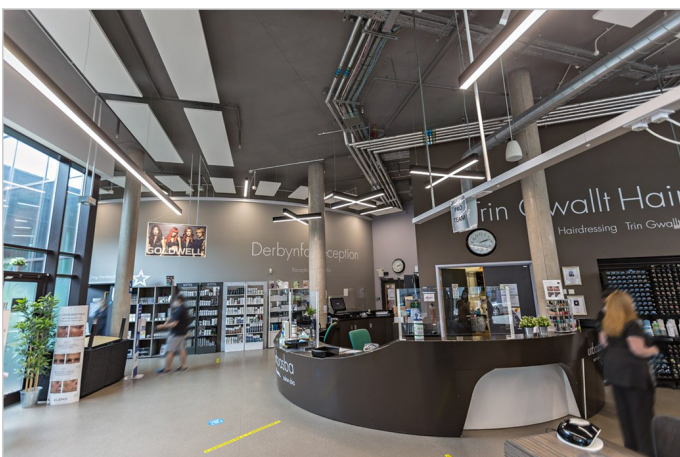
Runway Cross Black



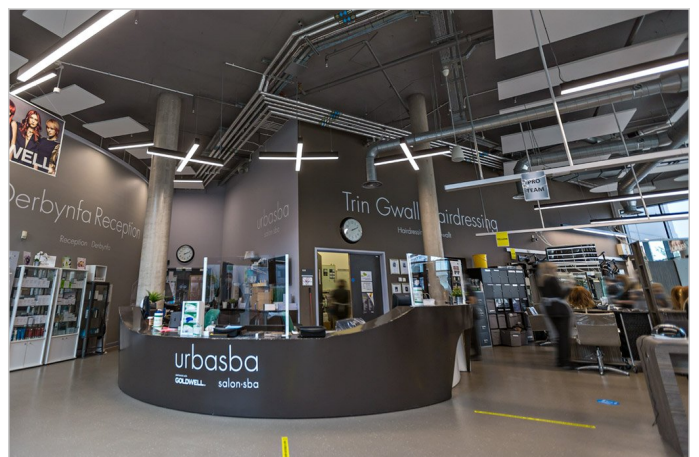
Runway Microprism Diffuser



Runway Opal Diffuser



Cardiff & Vale College using the Runway Suspended Cross



Cardiff & Vale College using the Runway Suspended Cross



Norfolk County FA using the Runway Cross

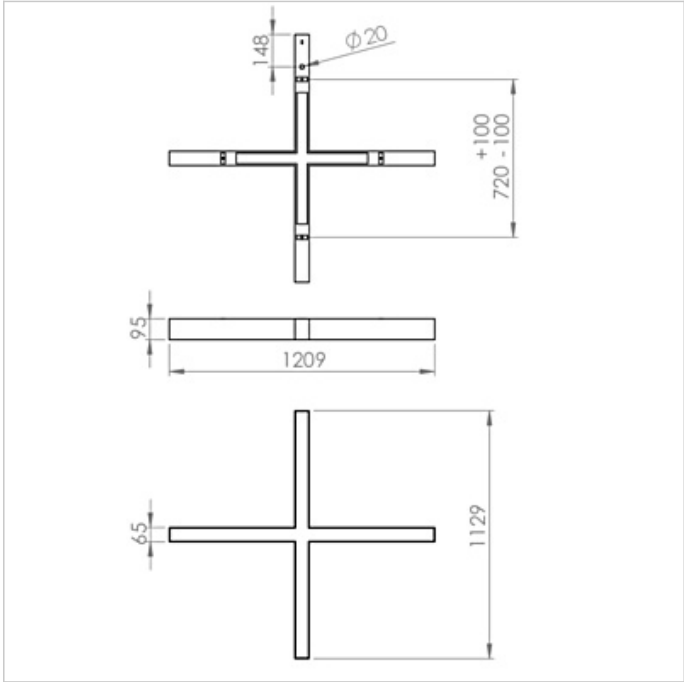


Norfolk County FA using the Runway Cross

### **RUNWAY DESIGN CONSIDERATIONS**

- L28 variant complies with BSEN 12464 3000 candela limit when used with MP diffuser.
- Autotest LA3 emergency and DALI Dimming will use common DALI BUS Cable. LA3 emergency can not be combined with other dimming types.
- White tunable variants come in non standard lumen outputs, please enquire for more details.
- Where luminaire lumen and lumen per watt figures are published these relate to the opal diffuser variants.
- Please specify the optic type required with all orders.
- Two X2 double suspension kits are required per luminaire
- Emergency and Reacta-Air Sensor can not be combined in 1000mm versions.

RUNWAY CROSS - TECHNICAL



Runway Cross



---

## RUNWAY CROSS - WARRANTY

---

At Dextra our commitment to service has been at the forefront throughout our history spanning more than forty years in the UK lighting market. Our service ethos extends beyond design and delivery, we believe supporting your installation throughout the warranty period is equally crucial, whilst the strength and longevity of Dextra Group provides peace of mind that our warranty will be supported throughout.

The Dextra range is supplied with a five year warranty commencing from the date of delivery. During the first three years defects will be repaired on site and the warranty will include both parts and labour. For the final two years drivers, emergency modules, wireless modules, sensors and LED circuits will be supplied free of charge to replace defective components, labour and other associated costs are not included.

Certain ranges and components are subject to exemptions:

- Lithium batteries are provided with a five year warranty. During the first three years defects will be repaired on site and the warranty will include both parts and labour. For the final two years replacement batteries will be supplied free of charge to replace defective components. Five year warranty became effective as of 03/02/25, Lithium emergency luminaires supplied prior to this date are supported with a three year on site warranty only. Labour and other associated costs are not included. Nickel Metal Hydride and Nickel Cadmium batteries are provided with a one year warranty for parts and labour.
- Emergency luminaires including AME LED, EXI LED, EXI2 LED, EXI Track, HBE LED, HBE2 LED, OAT2 LED, OEZ LED and Twinspot are supplied with a one year warranty for parts and labour. Lithium variants suffixed with the 5YR part code, the Autotest emergency with the LA3 part code and wireless variants with LA3RC or LSTR part codes are supplied with a five year warranty. For these extended warranty variants for the first three years defects will be repaired on site and the warranty will include both parts and labour. For the final two years replacement batteries will be supplied free of charge to replace defective components.
- Protec Micro, PTECF7 Fire Rated Downlights, Serenus and the Opus Sconce are provided with a five year replacement luminaire only warranty. Protec FR Fire Rated Downlights are provided with a 2 year replacement luminaire only warranty.
- Controls systems such as standalone sensors, switches, marshalling boxes and cabling are provided with a one year warranty for both parts and labour. DALI control systems are provided with a two year warranty for both parts and labour.
- LEDextra ranges are supplied with a three year parts or replacement luminaire only warranty with the exception of the IMPR RGBW, the Runway RGBW, the MOD RGBW, Tanek RGBW and the DexRing. These five ranges are supplied with our standard five year warranty during which defects within the first three years will be repaired on site and the warranty includes both parts and labour. For the final two years free of charge replacement components only will be supplied to rectify any failures but labour and other associated costs are not included.
- LEDEX ranges are supplied with a three year replacement luminaire only warranty.

- The Decorative Pendant ranges, Bebo, Dene, Nova, Fino and Stix are supplied with a 3 year replacement luminaire only warranty.

All warranties are subject to correct use of the product and will be invalidated by misuse, for example incorrect installation, unsuitable environmental conditions or incorrect maintenance. It is the duty of the customer to ensure that all the fault lies with the luminaire prior to requesting replacement parts or site repairs. In the event that no defect is found with the product our costs for attending site will be recharged to the customer and credit will not be issued against returned products. No consequential losses incurred resulting from any defect with our product will be reimbursed.

Given the nature of LED technology a small percentage of LEDs may fail during the lifetime of a luminaire, this does not cause a reduction in lumen output. As such LED luminaires are only deemed to be faulty for warranty purposes when in excess of ten percent of LEDs have failed in a single luminaire.

On site repair of products under warranty will be undertaken during normal working hours, 9am to 5pm Monday to Friday, and will require unrestricted access to luminaires. Where required Dextra will provide access equipment to carry out repairs at height, should luminaires have been installed in locations where reasonable provision for maintenance access has not been made we reserve the right to supply replacement product only. On site warranty repairs will only be undertaken on the mainland of the UK and Ireland, in all other locations replacement product only will be provided.

**If you require any assistance with regards to our products please contact our Customer Services department on 01747 858100.**

# RUNWAY CROSS - ORDER CODES

## LUMINAIRE CODES

### Standalone Surface / Suspended

Code	Description	Power	Llm/W
RWYX L28 OP GY	Runway Cross, 1,864llm, Opal, Grey, Colour 84	17.5W	106
RWYX L28 MP GY	Runway Cross, 1,742llm, Microprism, Grey, Colour 84	17.5W	99
RWYX L45 OP GY	Runway Cross, 2,994llm, Opal, Grey, Colour 84	28.2W	106
RWYX L45 MP GY	Runway Cross, 2,774llm, Microprism, Grey, Colour 84	28.2W	98
RWYX L60 OP GY	Runway Cross, 4,000llm, Opal, Grey, Colour 84	36.5W	109
RWYX L60 MP GY	Runway Cross, 3,706llm, Microprism, Grey, Colour 84	36.5W	101

Please refer to the Runway Design Consideration notes in the Technical section prior to placing your order

## DIMMING

Code	Description
A	DALI Digital Addressable Lighting Interface
S	Switch Dimming
D	DSI Digital Dimming
H	HFR Analogue 1-10v
C	Bi-Level Dimming For Standalone Switched Sensor
WT	White Tunable (Lumen Outputs Vary from Standard)

Please click [here](#) for full details on our white tunable offer.

Please refer to the Runway Design Consideration notes in the Technical section prior to placing your order.

## CONTROL

Code	Description
R44	Reacta 44, Presence & Daylight, 2.5-7M
RAS	Reacta-Air Bluetooth, Wireless, Presence & Daylight, 2.5-3M
RLI	Reacta-Link, Wireless Enabled Luminaire
RLS	Reacta-Link Wireless, Presence & Daylight, 2.5M-5M
RC	Reacta-Control, Wireless Enabled Luminaire
RCS	Reacta-Control Wireless, Presence & Daylight, 2.5-4M

Please click [here](#) for full details on our wireless controls.

Please refer to the Runway Design Consideration notes in the Technical section prior to placing your order.

## EMERGENCY

Code	Description
LE3	Lithium Standard Emergency 3 Hour
LS3	Lithium Selftest Emergency 3 Hour
LA3	Lithium Autotest Emergency 3 Hour
LSTR	Lithium Reacta-Link Emergency 3 Hour
LA3RC	Lithium Reacta-Control Emergency 3 Hour

Please refer to the Runway Design Consideration notes in the Technical section prior to placing your order.

LA3 Emergency can only be combined with DALI Dimming, other dimming types are not available in AT3 Emergency.

## MISCELLANEOUS

Code	Description
C**	Select Colour Temperature and Rendering; C827, C83, C84, C85, C865, C93, C94
WH	White Finish
BL	Black Finish
SUSP RWY 3M BF X2	Runway 3M suspension Kit Two Drops (two per fitting)
RWY INSTALL KIT	Runway Installation Kit
LSF	Low Smoke Zero Halogen

Please refer to the Runway Design Consideration notes in the Technical section prior to placing your order.

# Runway Cross Installation

220-240V / 50-60Hz  
IP20



## Terminal Labelling:

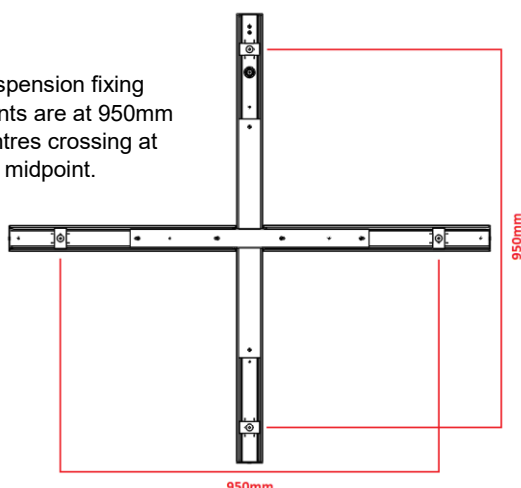
Power	
L1	Switched Live
E	Earth
N	Neutral
Emergency	
L2	Unswitched Live
DA/AT3	DALI Autotest
DA/AT3	DALI Autotest
Dimming	
-/D1/DA	Analogue/DSI/DALI
+/D2/DA	Analogue/DSI/DALI
L3	Switch Dim / Corridor Function



**WARNING:** Luminaire must be earthed. Risk of electric shock from LED boards if operated with cover removed. Installation / operation outside of luminaires intended scope invalidates warranty. Suitable only for domestic / light industrial / industrial applications within the scope of EN55015. Tested to compliance with BSEN 60598: specification for general requirements and tests. Must be installed by a suitably qualified person in accordance with all relevant legislation. Ambient operating temperature of 0°C to 25°C. If maximum operating temperature is exceeded luminaire will automatically dim / switch off. Terminal blocks are rated to 16A unless stated otherwise. The light source contained in this luminaire shall only be replaced by the manufacturer or his service agent or a similar qualified person. **LUMINAIRES WITH EMERGENCY PACK:** When supply is isolated battery output terminals may be live if battery is connected. Isolate mains and battery before servicing. Emergency luminaires require unswitched live connection taken from same phase as switched supply. When unswitched supply is connected status indicator illuminates green, when unswitched supply is disconnected indicator extinguishes and luminaire operates in emergency mode. 24 hour charge period required before undertaking full discharge test. Emergency test sheets provided should be used to record all emergency tests. Batteries should be replaced when 3 hour duration is not met. Excessive switching of permanent live may result in premature battery failure. Battery electrolyte can be harmful to eyes / open wounds, do not puncture, if electrolyte touches skin / eyes flush with water. Do not incinerate batteries.

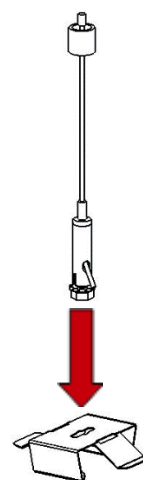
1.

Suspension fixing points are at 950mm centres crossing at the midpoint.

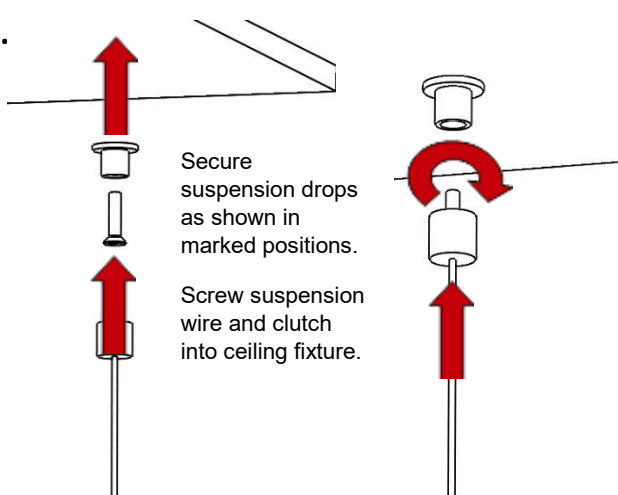


2.

Attach the suspension wire the spring brackets ready to be attached to the trunking.

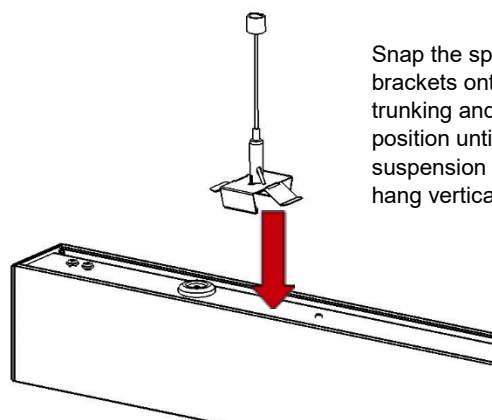


3.

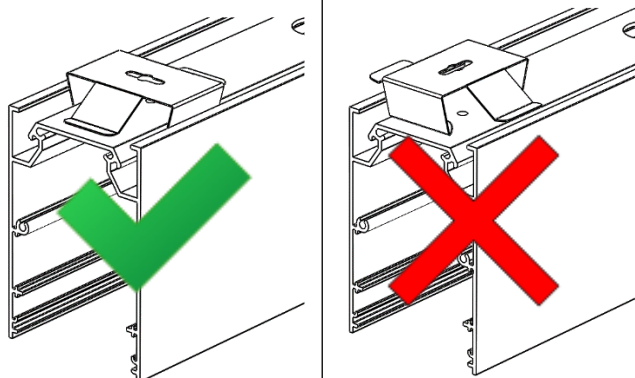


4.

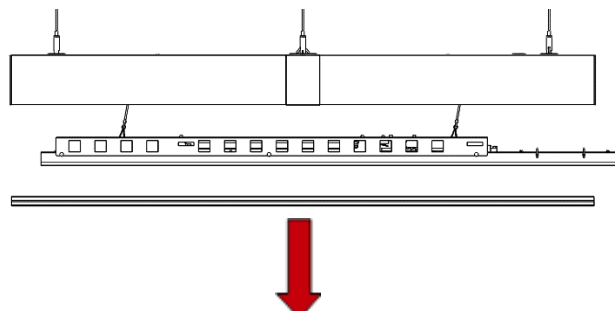
Snap the spring brackets onto the trunking and adjust position until the suspension wires hang vertically.



5.

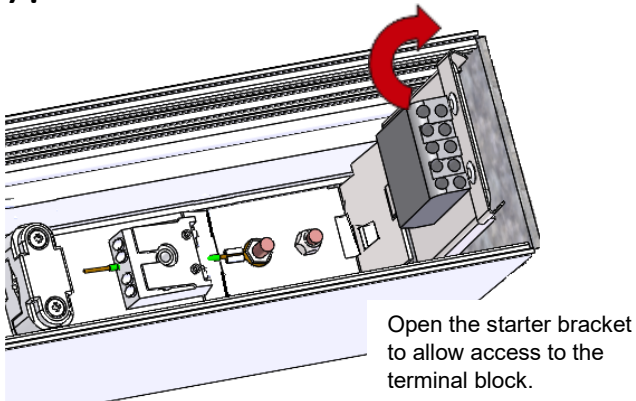


6.

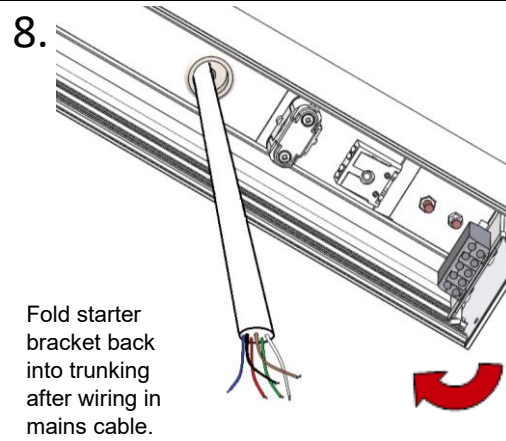


Remove the long 1200mm section of diffuser and drop the gear tray onto its tethers to access the starter bracket in the trunking.

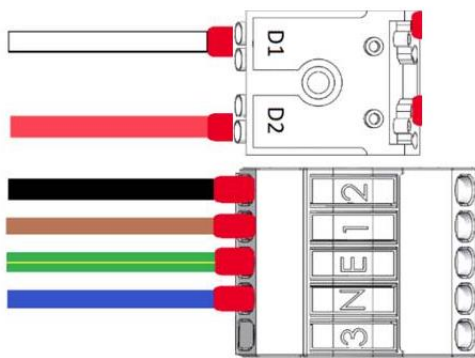
7.



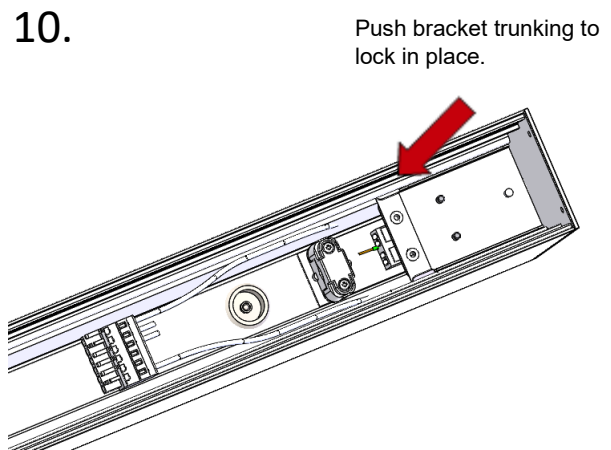
8.



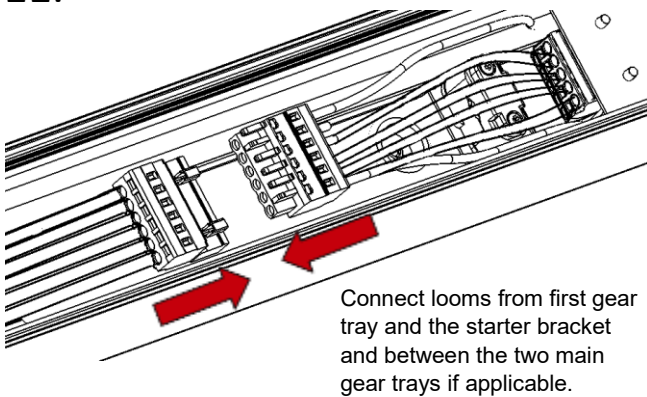
9.



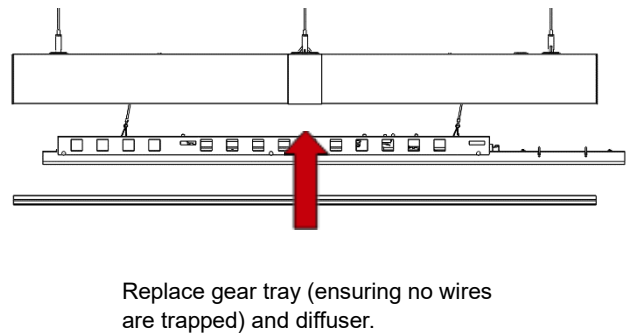
10.



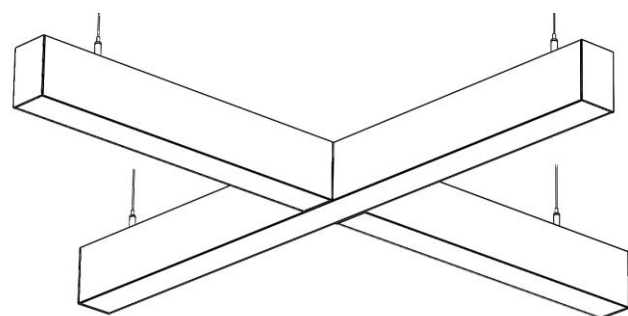
11.



12.



13.



## Maintenance

- ① Disconnect luminaire before undertaking any maintenance or cleaning.
- ② Cleaning should be undertaken on external parts of the luminaire only using a slightly damp lint free cloth.
- ③ Use a flat headed screwdriver to remove diffuser.
- ④ Remove gear tray from housing.
- ⑤ Remove plastic rivets to separate the two gear trays.
- ⑥ Use a pan pozi screwdriver to remove components.
- ⑦ Please contact Dextra for assistance with spare component supply.

