



# PRODUCT SPECIFICATION

---

FORTECO



---

## INTRODUCTION

---

The Forteco offers a powerful, robust and versatile solution for applications ranging from industrial and manufacturing through to food production, logistics and sports halls. With die cast aluminium LED housings and steel spine finished in powder coat grey RAL9006 the Forteco is designed to achieve an IK10 rating offering protection against impacts and ball strikes, whilst the ventilated heat sink design allows this luminaire to offer up to 60,000 lumen outputs. Depending on lumen output and emergency gear selection the Forteco is also designed to operate in ambient temperatures up to up to 50°C.

With three lens options and 2, 4 or 6 LED circuit variants, the Forteco can be tailored to suit a wide range of applications, mounting heights and luminaire spacings. This versatility is further enhanced with a range of control options offering integral presence detection and daylight detection as well as compatibility with our wireless systems such as Reacta-Control and Reacta-Link offering centralised control and monitoring. The Forteco can also be specified with all common dimming variants and is available with integral lithium emergency offering extended battery lifetime and warranty.



CE IP65 IK10 TM21: L90>60K HOURS / L80>90K HOURS 3 STEP MACADAM ELLIPSE

---

## APPLICATION

---

- Food / Clean Area
- Industrial / Manufacturing
- Retail
- Sports Hall
- Transport
- Warehouse / Storage

---

## SPECIFICATION

---

### CONSTRUCTION

- › Housing: 0.8mm HC220 steel
- › Housing: High pressure die cast aluminium
- › Finish: Polyester powder painted RAL 9006 matt grey
- › Lens: Injection moulded polycarbonate lens
- › IK10 in non sensor variants
- › IP65

### PERFORMANCE

- › Part L2 compliant
- › 3SCDM Three step Macadams ellipse
- › TM21: L90>60K Hours / L80>90K Hours
- › Up to 159 luminaire lumens per circuit watt.

### ENVIRONMENTAL

- › Designed to allow simple replacement of components with commonly available tools in compliance with the Eco Design Directive, please see the installation leaflet for maintenance instructions.
- › Powered by European branded drivers and emergency modules ensuring replacement parts are easily sourced.
- › Every luminaire is labelled with a unique ID number allowing easy identification of spare parts for the lifetime of the product.
- › Contains no single use plastics or polystyrene packaging.
- › Supplied in plain card boxes with paper tape ensuring packaging is easily recycled.
- › Designed to allow simple disassembly for end of life recycling.
- › UK based manufacturing providing local support throughout the product lifetime and minimising transportation miles.

### EMERGENCY

- › Available with optional standard, self test and autotest integral emergency with lithium batteries for extended warranty and lifetime.
- › Optional Reacta-Link wireless emergency for automated centralised reporting.
- › Optional Reacta-Control wireless emergency for automated centralised reporting.
- › Optional central battery changeover relay

### CONTROL

- › Optional compatibility with a range of dimming systems including DALI, DSI and Switch Dimming
- › Optional Integral R18 presence and daylight sensor
- › Optional integral Reacta-Link for integration with Reacta-Link wireless installations

## INSTALLATION

- Suitable for suspended installation
- Suitable for trunking installation
- Suitable for surface installation

## VARIATIONS

- Available with a wide range of colour temperatures and renderings
- Available in a range of housing sizes and lumen outputs
- Some variants suitable for 50°C ambient temperatures

---

## IMAGES

---

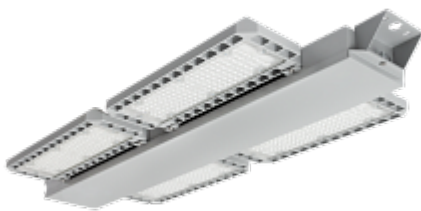
### PRODUCT IMAGES



Forteco 2 Cell



Forteco 4 Cell with Sensor



Forteco 4 Cell



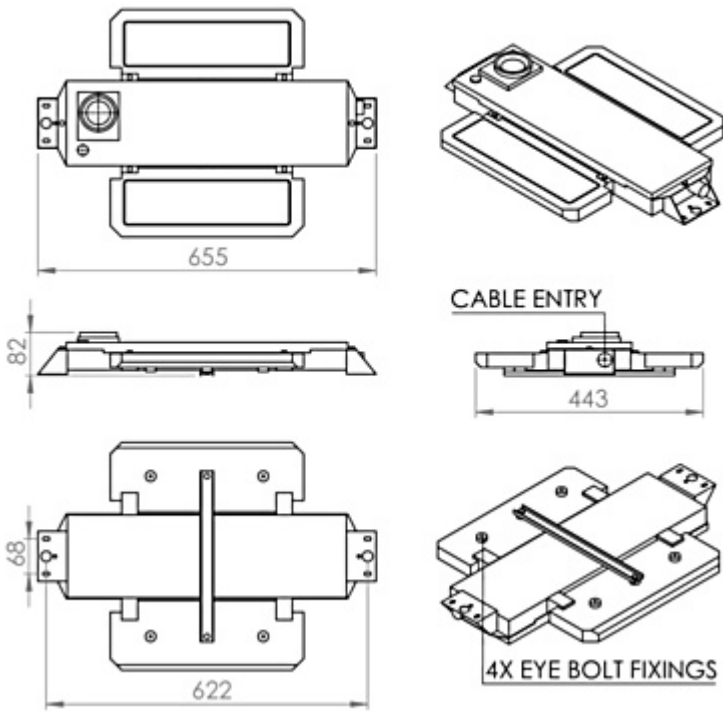
Forteco 6 Cell

---

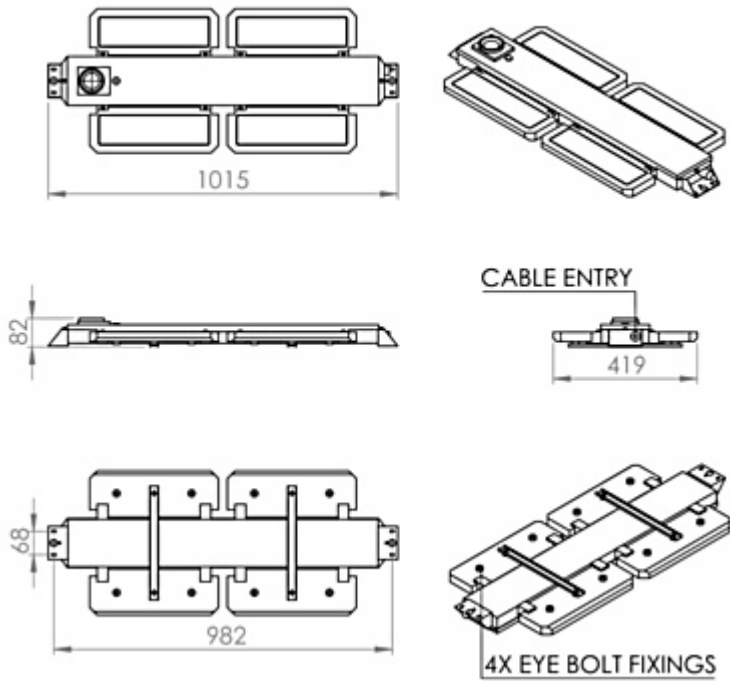
## TECHNICAL

---

➤

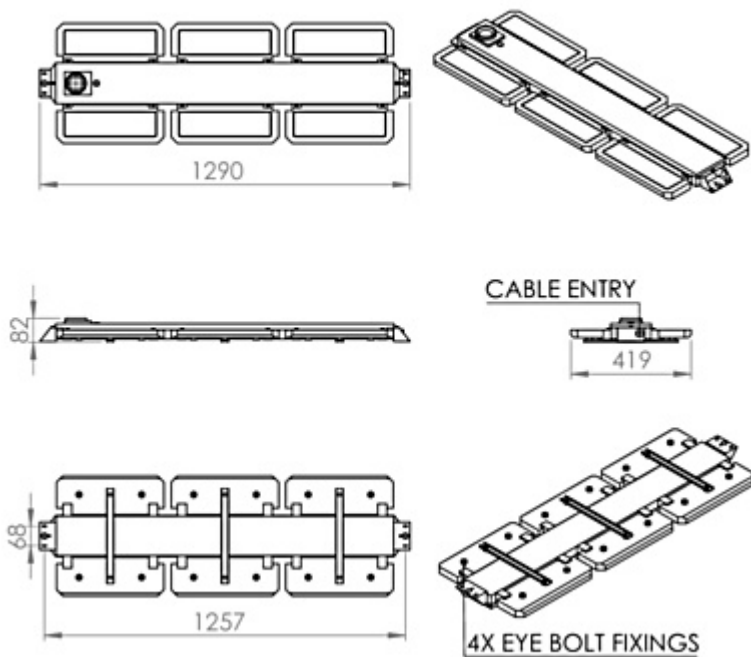


Forteco 2 Cell



Forteco 4 Cell





Forteco 6 Cell

---

## WARRANTY

---

At Dextra our commitment to service has been at the forefront throughout our history spanning more than forty years in the UK lighting market. Our service ethos extends beyond design and delivery, we believe supporting your installation throughout the warranty period is equally crucial, whilst the strength and longevity of Dextra Group provides peace of mind that our warranty will be supported throughout.

The Dextra range is supplied with a five year warranty commencing from the date of delivery. During the first three years defects will be repaired on site and the warranty will include both parts and labour. For the final two years drivers, emergency modules, wireless modules, sensors and LED circuits will be supplied free of charge to replace defective components, labour and other associated costs are not included.

Certain ranges and components are subject to exemptions:

- Lithium batteries are provided with a five year warranty. During the first three years defects will be repaired on site and the warranty will include both parts and labour. For the final two years replacement batteries will be supplied free of charge to replace defective components. Five year warranty became effective as of 03/02/25, Lithium emergency luminaires supplied prior to this date are supported with a three year on site warranty only. Labour and other associated costs are not included. Nickel Metal Hydride and Nickel Cadmium batteries are provided with a one year warranty for parts and labour.
- Emergency luminaires including AME LED, EXI LED, EXI2 LED, EXI Track, HBE LED, HBE2 LED, OAT2 LED, OEZ LED and

Twinspot with Nickel Metal Hydride batteries are supplied with a one year warranty for parts and labour. Lithium variants of these ranges are supplied with a three year warranty for parts and labour with the exception of the AME2, EXI3, HBE3 and TWS IP65 L7 ranges which are supplied with a one year parts and labour warranty. TWS IP65 L7 in autotest and wireless variants are supplied with the standard three year lithium battery warranty.

- Protec Micro, PTECF7 Fire Rated Downlights, Serenus and the Opus Sconce are provided with a five year replacement luminaire only warranty. Protec FR Fire Rated Downlights are provided with a 2 year replacement luminaire only warranty.
- Controls systems such as standalone sensors, switches, marshalling boxes and cabling are provided with a one year warranty for both parts and labour. DALI control systems are provided with a two year warranty for both parts and labour.
- LEDextra ranges are supplied with a three year parts or replacement luminaire only warranty with the exception of the IMPR RGBW, the Runway RBGW, the MOD RGBW, Tanek RGBW and the DexRing. These five ranges are supplied with our standard five year warranty during which defects within the first three years will be repaired on site and the warranty includes both parts and labour. For the final two years free of charge replacement components only will be supplied to rectify any failures but labour and other associated costs are not included.
- LEDEX ranges are supplied with a three year replacement luminaire only warranty.
- The Decorative Pendant ranges, Bebo, Dene, Nova, Fino and Stix are supplied with a 3 year replacement luminaire only warranty.

All warranties are subject to correct use of the product and will be invalidated by misuse, for example incorrect installation, unsuitable environmental conditions or incorrect maintenance. It is the duty of the customer to ensure that all the fault lies with the luminaire prior to requesting replacement parts or site repairs. In the event that no defect is found with the product our costs for attending site will be recharged to the customer and credit will not be issued against returned products. No consequential losses incurred resulting from any defect with our product will be reimbursed.

Given the nature of LED technology a small percentage of LEDs may fail during the lifetime of a luminaire, this does not cause a reduction in lumen output. As such LED luminaires are only deemed to be faulty for warranty purposes when in excess of ten percent of LEDs have failed in a single luminaire.

On site repair of products under warranty will be undertaken during normal working hours, 9am to 5pm Monday to Friday, and will require unrestricted access to luminaires. Where required Dextra will provide access equipment to carry out repairs at height, should luminaires have been installed in locations where reasonable provision for maintenance access has not been made we reserve the right to supply replacement product only. On site warranty repairs will only be undertaken on the mainland of the UK and Ireland, in all other locations replacement product only will be provided.

**If you require any assistance with regards to our products please contact our Customer Services department on 01747 858100.**

## ORDER CODES

### LUMINAIRE

Code	Description	Power	Llm/W
FRT2 L200 OA	Forteco IP65, 2 Cell, 18,440lm, Open Area, Colour 84	116.6W	158
FRT2 L200 HR	Forteco IP65, 2 Cell, 18,560lm, High Rack, Colour 84	116.6W	159
FRT2 L200 UHR	Forteco IP65, 2 Cell, 18,420lm, Ultra High Rack, Colour 84	116.6W	158
FRT4 L300 OA	Forteco IP65, 4 Cell, 27,660lm, Open Area, Colour 84	176.8W	156
FRT4 L300 HR	Forteco IP65, 4 Cell, 27,480lm, High Rack, Colour 84	176.8W	155
FRT4 L300 UHR	Forteco IP65, 4 Cell, 27,630lm, Ultra High Rack, Colour 84	176.8W	156
FRT4 L400 OA	Forteco IP65, 4 Cell, 36,880lm, Open Area, Colour 84	233.4W	158
FRT4 L400 HR	Forteco IP65, 4 Cell, 37,120lm, High Rack, Colour 84	233.4W	159
FRT4 L400 UHR	Forteco IP65, 4 Cell, 36,840lm, Ultra High Rack, Colour 84	233.4W	158
FRT6 L600 OA	Forteco IP65, 6 Cell, 55,320lm, Open Area, Colour 84	353.6W	156
FRT6 L600 HR	Forteco IP65, 6 Cell, 55,680lm, High Rack, Colour 84	353.6W	157
FRT6 L600 UHR	Forteco IP65, 6 Cell, 55,260lm, Ultra High Rack, Colour 84	353.6W	156

L200 and L400 non emergency variants are suitable for 50°C ambient temperatures

### DIMMING

Code	Description
A	DALI Digital Addressable Lighting Interface
S	Switch Dimming
D	DSI Digital Dimming
H	HFR Analogue 1-10v

### CONTROL

Code	Description
R11	Reacta 11, Presence, IP65, Low Temperature, 3-15M
MS18	Reacta 18 IP65, Presence and Daylight, 8-18M
RC18	Reacta-Control Wireless 18 IP65, Presence and Daylight, 8-18M

### EMERGENCY

Code	Description
LE3	Lithium Standard Emergency 3 Hour
LS3	Lithium Selftest Emergency 3 Hour
LA3	Lithium Autotest Emergency 3 Hour
LE3H	Lithium Standard Emergency 3 Hour High Output
LS3H	Lithium Selftest Emergency 3 Hour High Output
LA3H	Lithium Autotest Emergency 3 Hour High Output
LSTR	Lithium Reacta-Link Emergency 3 Hour
LA3RC	Lithium Reacta-Control Emergency 3 Hour
CB	Central Battery, Please Specify 50V, 110V or 230V when Ordering

### MISCELLANEOUS

Code	Description
C**	Select Colour Temperature and Rendering: C83, C84, C85, C865, C93, C94
LSF	Low Smoke Zero Halogen