

## Runway Curve Installation

220-240V / 50-60Hz  
IP20

**Terminal Labelling:**

**Power**  
L1 Switched Live  
E Earth  
N Neutral

**Emergency**  
L2 Unswitched Live  
DA/AT3 DALI Autotest  
DALI Autotest

**Dimming**  
-/D1/DA Analogue/DSI/DALI  
+/D2/DA Analogue/DSI/DALI  
L3 Switch Dim/ Corridor Functi



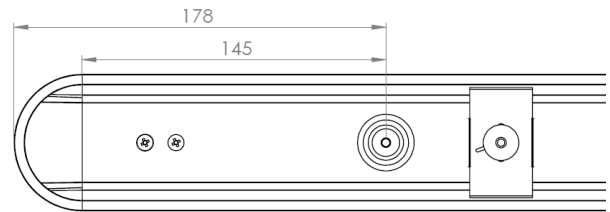
**WARNING:** Luminaire must be earthed. Risk of electric shock from LED boards if operated with cover removed. Installation / operation outside of luminaires intended scope invalidates warranty. Suitable only for domestic / light industrial / industrial applications within the scope of EN55015. Tested to compliance with BSEN 60598: specification for general requirements and tests. Must be installed by a suitably qualified person in accordance with all relevant legislation. Ambient operating temperature of 0°C to 25°C. If maximum operating temperature is exceeded luminaire will automatically dim / switch off. Terminal blocks are rated to 16A unless stated otherwise. The light source contained in this luminaire shall only be replaced by the manufacturer or his service agent or a similar qualified person. **LUMINAIRES WITH EMERGENCY PACK:** When supply is isolated battery output terminals may be live if battery is connected. Isolate mains and battery before servicing. Emergency luminaires require unswitched live connection taken from same phase as switched supply. When unswitched supply is connected status indicator illuminates green, when unswitched supply is disconnected indicator extinguishes and luminaire operates in emergency mode. 24 hour charge period required before undertaking full discharge test. Emergency test sheets provided should be used to record all emergency tests. Batteries should be replaced when 3 hour duration is not met. Excessive switching of permanent live may result in premature battery failure. Battery electrolyte can be harmful to eyes / open wounds, do not puncture, if electrolyte touches skin / eyes flush with water. Do not incinerate batteries.

1.



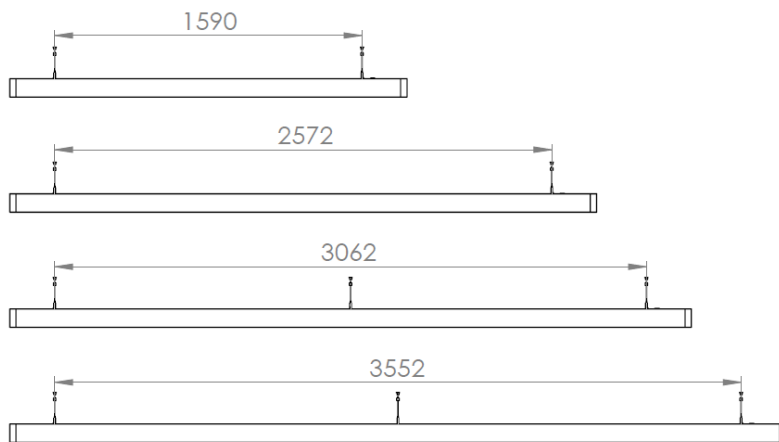
Unpack the fitting. The luminaire will arrive as a complete unit, no disassembly required.

2.



The cable entry point is the same across all variants.

3.



Suspension points:

2M – Overall length 2055mm – 2 x suspension points required.

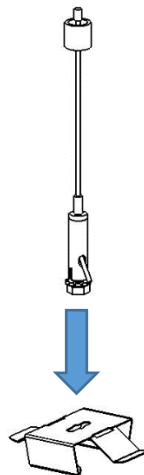
3M – Overall length 3037mm - 2 x suspension points required.

3.5M – Overall length 3527mm - 3 x suspension points required.

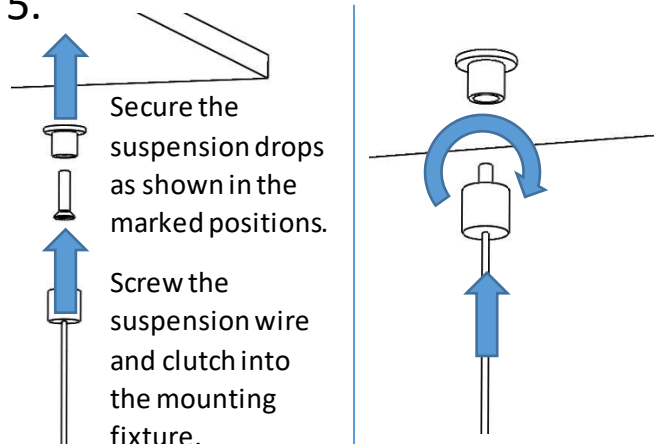
4M - Overall length 4017mm - 3 x suspension points required.

4.

Attach the suspension wire to the spring brackets ready to be attached to the trunking.



5.

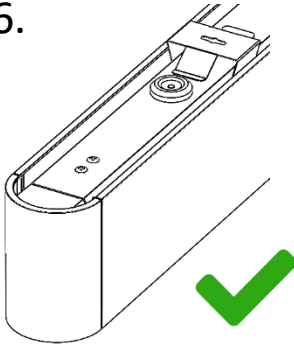


Secure the suspension drops as shown in the marked positions.

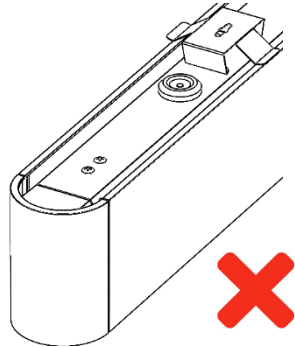
Screw the suspension wire and clutch into the mounting fixture.

## Runway Curve Installation

6.

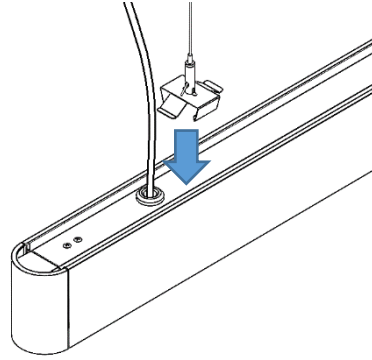


Correct orientation



Incorrect orientation

7.

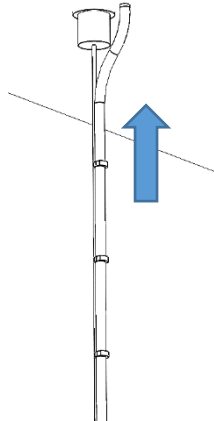


Snap the spring brackets onto the trunking and adjust them until the suspension wires hang vertically.

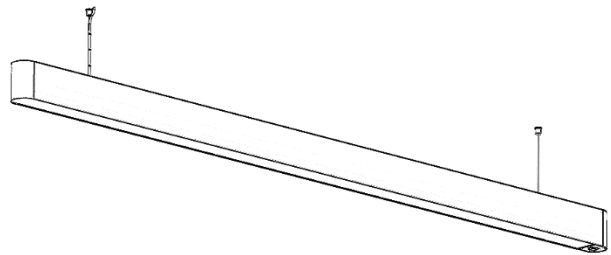
8.

Run the lead adjacent to the suspension wire. Cable tie the two together.

Establish a connection to the luminaire.



9.



Installation is complete.

### Maintenance

- 1 Disconnect luminaire before undertaking any maintenance or cleaning.
- 2 Cleaning should be undertaken on external parts of the luminaire only using a slightly damp lint free cloth.
- 3 Use a flat headed screwdriver to remove the diffuser.
- 4 Disconnect starter loom.
- 5 Use the tools provided in the 'RWYC INSTALL KIT'. Insert the tool into the slots on the tray and pull down. Drop it down onto its tethers.
- 6 Remove plastic rivets to separate the two gear trays.
- 7 Use a pan pozi screwdriver to remove components.
- 8 Please contact Dextra for assistance with spare component supply.

